

What is jmSerialCom

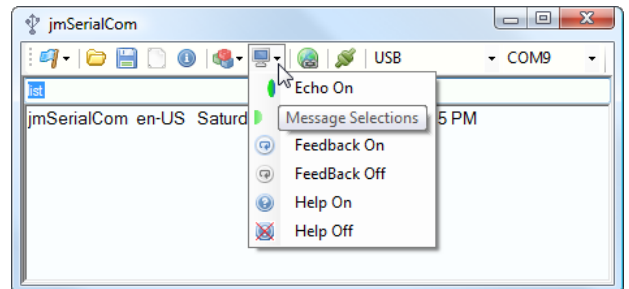
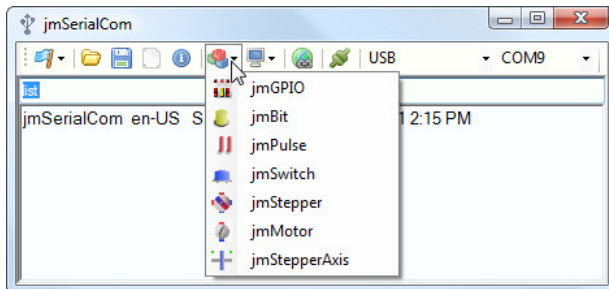
jmSerialCom is a platform that integrates serial communication and GUI controls to rapidly test chips and develop applications based on interactive firmware built by jmCLIG.

Because jmCLIG generates multitask firmware with event messaging, high level GUI applications can be easily developed.

Right now only basic functionality is provided.

GUI controls are called jmGUI.

jmSerialCom Menus



Where is jmSerialCom

Right now jmSerialCom is a standalone application.
(for proof of concept)

A video demonstration will be put on-line soon.

It's built from DotNet Technology and will be available as an on-line application or cloud service at jmSerialCom.com.

(prevision date may 2011)

jmGUI Modules

Each jmGUI Module has its own document.

They will be posted on mbed.org.

